

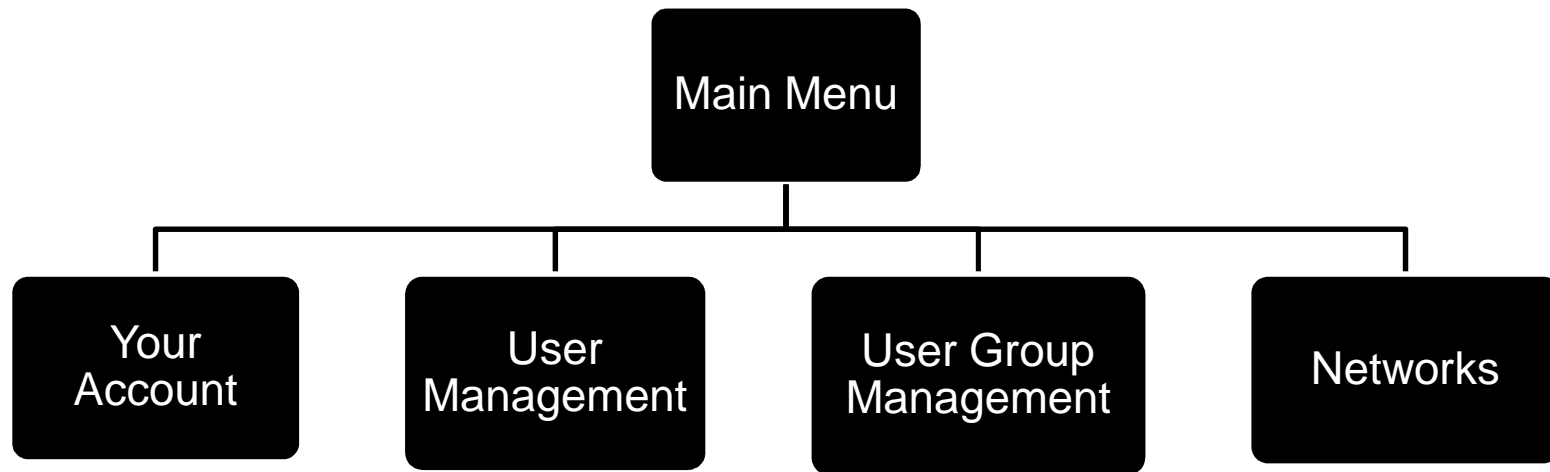
DBL Interactive

A Bayesian network decision support toolkit for the web

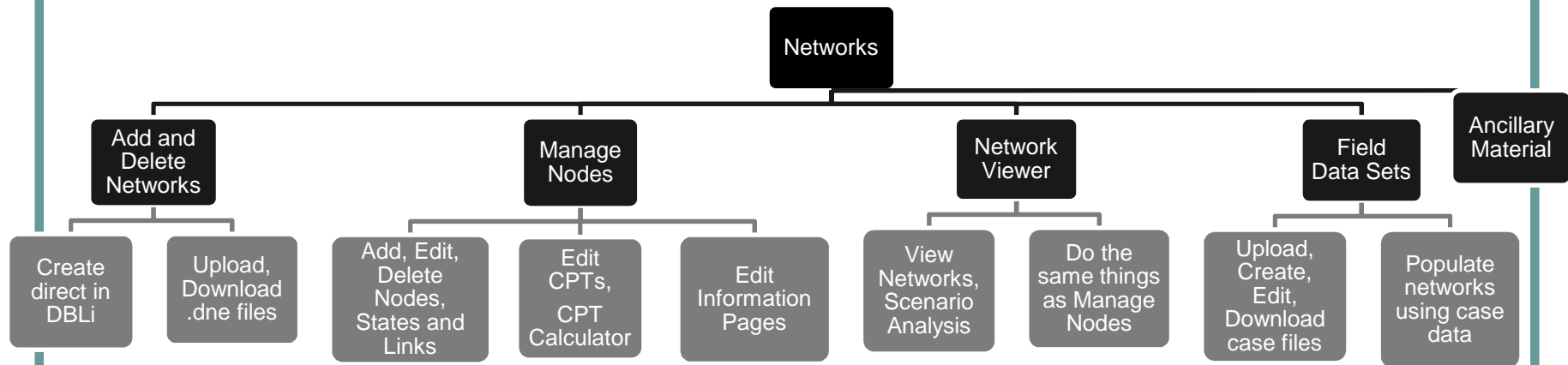
What is DBLi?

- A web-based BN decision support toolkit
- Designed to meet the growing need for web-based model building and delivery tools, and for eResearch
- Combines the following:
 - A database (SQL Server)
 - A BN engine (Smile)
 - A graphical user interface (Adobe Flash/Flex, HTML)
 - A GIS (ASPmap)
 - Custom built tools (field data set manager, CPT calculator, information pages, discussion boards, etc.)

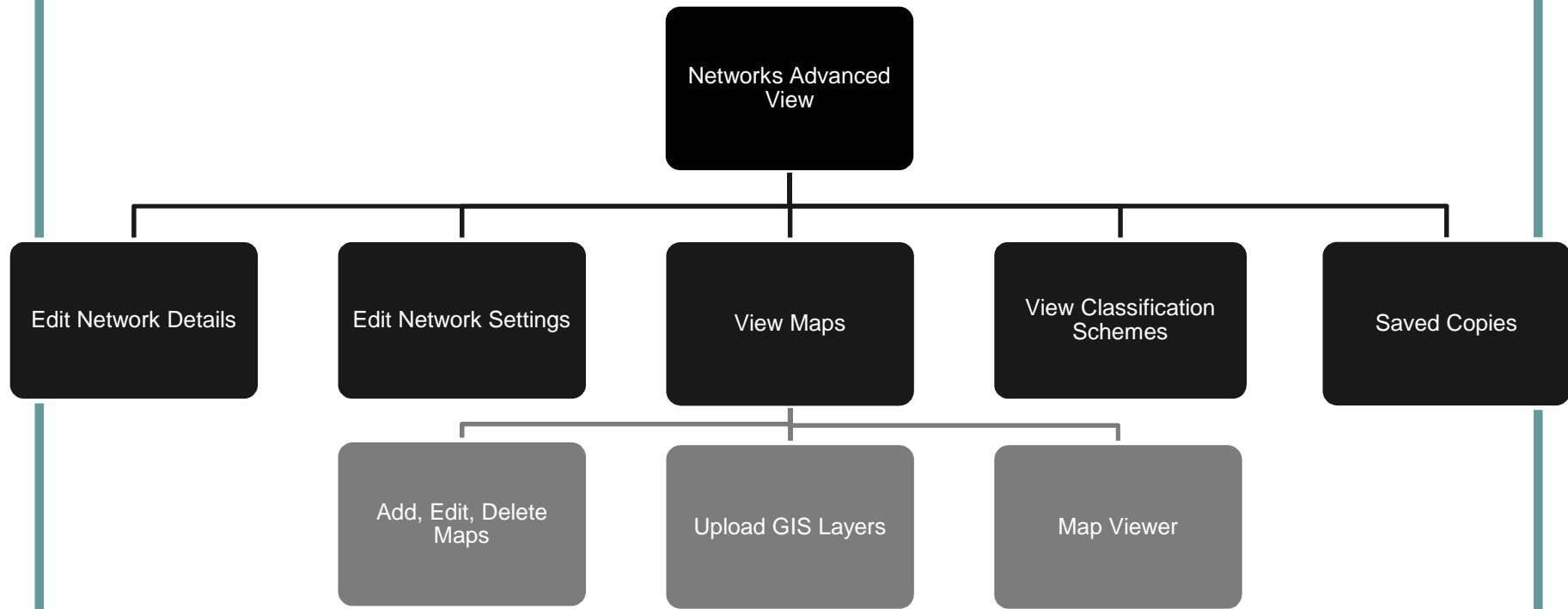
DBLi Structure



DBLi Structure



DBLi Structure



Live Site

<http://www.decisionbasedlearning.org/>

Live Sites

Demo

www.decisionbasedlearning.org/HostedSites/ISSS2010